

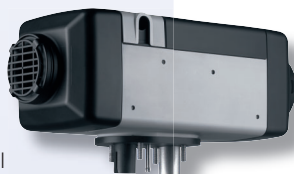
### 32L Cooler Box

- Thermostat temperature range +5° to -16°C
- Danfoss BD-35F Compressor and Converter
- CFC Free R134a Refrigerant
- Multiple voltage DC 12/24V and AC 115/230V with auto select
- 3 stage battery protection
- Robust design
- Mounting Kit & Insulated carry bag available
- Low power consumption
- Electronic thermostat with ECO and MAX functions
- Unit Dimensions: 380 x 350 x 585mm (HxWxD)
- Weight: 16kg
- 3 year Australia-wide warranty



### AirTop 2000ST

- 12V and 24V Diesel Powered
- Fast, powerful and economical
- Constant temperatures with electronic thermostat
- Fast heat up time
- Low maintenance
- Quiet operation day and night
- Dehumidification of cabin
- Compact Design: 317 x 120 x 121mm (LxWxH)
- Weight: 2.6kg
- 2 year Australia-wide warranty



## Air-Conditioning – Machinery & Construction



Suitable for cranes, agricultural machinery, earth-moving equipment, trucks, buses and service vehicles.

- Roof mounted air-conditioning system
- Robust design
- 2 year Australia-wide warranty

### CC4E

- Connects to on-board 24V power supply
- Self contained unit
- 12,000 BTU cooling capacity (3.5kW)

### CC5

- Available as 12V or 24V
- 17,000BTU cooling capacity (5kW)

### CC8

- Available as 12V or 24V
- 29,000BTU cooling capacity (8.5kW)

### Webasto Product Australia Pty Ltd

Global Comfort Solutions  
423-427 The Boulevard  
Kirrawee DC NSW 2232 Australia  
Phone: +61 (0)2 8536 4800  
Fax: +61 (0)2 8536 4899  
info@webasto.com.au

[www.webasto.com.au](http://www.webasto.com.au)

**No matter where or when – rest easy with Webasto**

- Evaporative Coolers
- Air-Conditioning
- Air Heaters
- Indel Fridges



## Air-Conditioning

### Fresco 3000

- Available as 12V and 24V DC
- Cooling capacity: 950W / 3.25BTU/hr
- Single Danfoss BD350 Compressor
- Low voltage cut-out
- Digital control panel with programmable timer
- Multi function remote control
- 6 speed fan
- 4 adjustable and closable vents
- No fuel consumption
- Low maintenance
- Quiet operation day and night
- Low profile – Slim line design
- Condenser Dimensions: 463 x 187 x 695mm (LxWxH)
- Evaporator Dimensions: 625 x 107 x 260mm (LxWxH)
- Light weight – only 23kg combined (condenser 18kg, evaporator 5kg)
- Minimal intrusion on rear wall during installation – single small hole cut-out
- 2 year Australia-wide warranty



## Evaporative Cooling

### NiteCool TCC-100

- Available as 12V or 24V
- Slim line Roof mounted unit
- Very low profile – 125mm high
- Unit Dimensions: 728 x 895 x 125mm (LxWxH)
- Unit Weight: 19kg
- Cooling without idling
- No fuel consumption
- Quiet operation day and night
- Low maintenance
- Powerful cooling due to pre-cooling chamber principle
- Integrated low voltage cut-out
- Operation via remote control or integrated control panel
- Programmable control of water level
- Water Tank: 27.5L capacity
- Suitable for a wide range of trucks
- 2 year Australia-wide warranty



## bycool Evaporative Cooling

- Available as 12V or 24V
- Cooling without idling
- No fuel consumption
- Low water consumption
- Quiet operation day and night
- RF remote control
- Programmable timing
- 2 tanks – one outside for water supply (35L capacity) – one with anti-overflow integrated into the unit
- 2 year Australia-wide warranty

### Evolution

- Roof mounted unit
- Aerodynamic design
- Unit Dimensions: 860 x 785 x 240mm (LxWxH)
- Unit Weight: 19kg



### Mochila

- Rear mounted unit
- Use of roof light and hatch still possible
- Avoids cutting into roof spoiler
- Unit Dimensions: 835 x 495 x 160mm (LxWxH)
- Unit Weight: 17kg

