

Marine

Refrigerators and Freezers



DRAWER REFRIGERATORS AND FREEZERS

Easy access to food in modern and elegant design

Widest range of drawer fridges on the market!



- 1 Innovative design
- 2 Easy access, comfortable to use
- 3 Freezer compartment
- 4 Blue LED interior light
- 5 Robust drawer mechanism
- 6 Off Shore Lock, for perfect closure at any time
- 7 First frost free feature for the DR 55 and DR 65

Available options

- Exclusive design with glass front in four colours*
- Different flanges: 3 to 4 flanges available, in order to obtain flush mounted installation
- Different cooling systems: ventilated as standard, water cooled with a self pumping kit (patented) and water cooled through a sea water pump for tropical conditions
- Universal kit AC/DC optional: allows sufficient power supply all over the world
- Customized frames for side by side applications

*other colours on demand

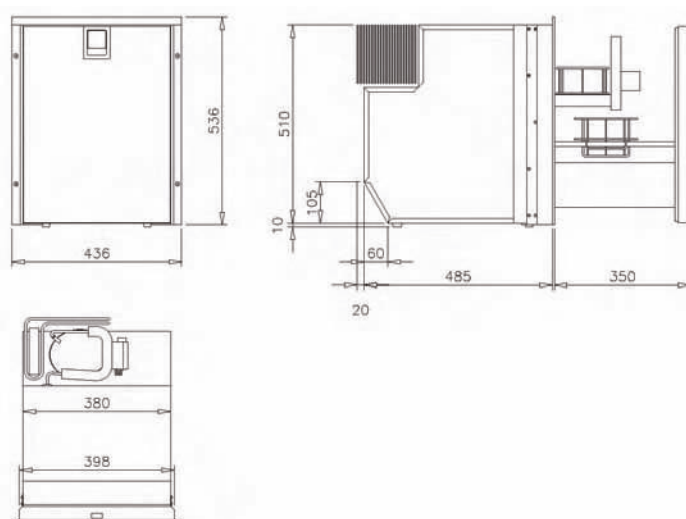
Ask for documentation on standard refrigerator



Type	Volume litres	Dimensions HxWxD mm ¹	Cut Out Dimensions HxWxD mm ¹	Available with ASU	Weight Kgs	Power consumption* Average/max	Danfoss Compressor Type
DR 49 INOX	49	510 x 405 x 520	520 x 410 x 525	No	21	0.7/5.0 A	BD35F
DR 49 GLASS	49	510 x 405 x 520	520 x 410 x 525	No	21	0.7/5.0 A	BD35F
DR 55 FROST FREE FREEZER INOX	55	540 x 470 x 520	550 x 475 x 525	No	31	2.5/6.0 A	BD50F
DR 55 FROST FREE FREEZER GLASS	55	540 x 470 x 520	550 x 475 x 525	No	31	2.5/6.0 A	BD50F
DR 65 INOX	65	540 x 470 x 520	550 x 475 x 525	No	24	0.8/2.7 A	BD35F
DR 65 GLASS	65	540 x 470 x 520	550 x 475 x 525	No	31	2.5/6.0 A	BD50F
DR 65 FROST FREE INOX	65	540 x 470 x 520	550 x 475 x 525	No	31	2.5/6.0 A	BD50F
DR 65 FROST FREE GLASS	65	540 x 470 x 520	550 x 475 x 525	No	31	2.5/6.0 A	BD50F
DR 105 INOX	105	590 x 520 x 520	610 x 530 x 530	No	21	1.2/5.0 A	BD35F
DR 190 INOX	190	560 x 900 x 795	570 x 910 x 800	No	31	2.5/6.0 A	BD50F

¹ With the option of universal AC/DC the depth increases by 20 mm.

* Indicates average/maximum Amp draw in operation in 12 volt with +6°C in the refrigeration space, ambient temperature +22°C.



Coming soon:
*The innovative
 DR 160 INOX
 including an
 ice maker*



Webasto Product Australia Pty Ltd
 423-427 The Boulevard Kirrawee NSW 2232
 Ph +61(0)2 8536 4800 Fax +61(0)2 8536 4899
 Email : info@webasto.com.au

www.webasto-marine.com

Please refer to detailed installation and operation guidelines of Indel Webasto products